

Organization Chart of Bihar Police

**Director General of
Police**

**ADG
(Headquarter)**

**ADG
(Law & Order)**

**ADG
(SCRB)**

**ADG
(CID)**

**ADG
(Spl. Branch)**

**ADG
(Military Police)**

**ADG
(Wireless)**

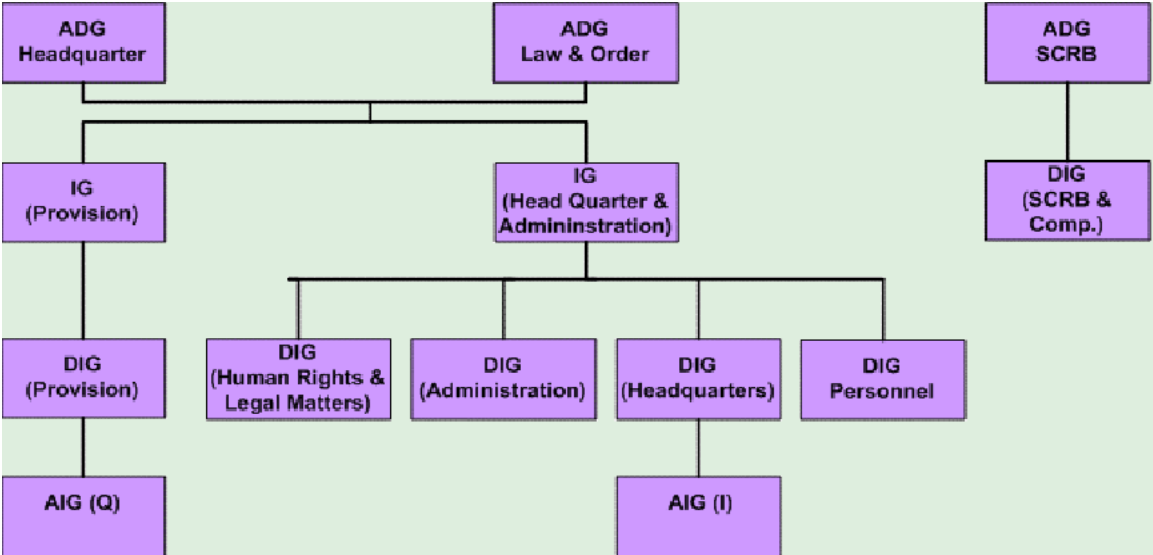
**ADG
(Training)**

**ADG
(Modernization)**

**IG
(Operation)**

**IG
(Railway)**

**All Zonal ADG/IG
(Patna, Muzaffarpur,
Bhagalpur, Darbhanga)**



**ADG
(Wireless)**

**IG
(Wireless)**

**DIG
(Wireless)**

**AIG
(Wireless)**

**ADG
(Training)**

**SP (CTS)
Nath Nagar**

**ADG
(Modernization)**

**IG
(Modernization)**

**ADG
(Spl. Branch)**

**IG
(Spl. Branch)**

SP (A)

SP (B)

SP (G)

**IG
(Security)**

SP (S)

